

Attain your sustainability goals with State Agency Support - the range explained.

Meet your speakers:



Dominic Schone
IDA Ireland

Dominic Schone is a member of IDA's Sustainability Department. The team was established to enable the delivery of IDA's sustainability strategy outlined in its strategy Driving Recovery & Sustainable Growth 2021-24. The department has a specific focus in supporting IDA client companies decarbonise their operations, attract foreign direct investment in the green economy to Ireland and in supporting IDA to decarbonise its own operations. Dominic is working closely with IDA Relationship Managers in supporting IDA clients in the Life Sciences, Engineering and Technology sectors. Previously Dominic has worked across IDA's Engineering and Technology teams in IDA.



Fergus Sharkey
Head of Business Supports and Transport - SEAI

Fergus Sharkey is a chartered engineer and experienced leader in the sustainable energy sector. Fergus' current role is Head of Business Supports and Transport in Sustainable Energy Authority of Ireland where he leads of department providing a range of supports to help business transition to clean energy, as well as supports for electric vehicles and charging.



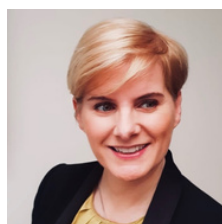
Padraic McElwee
Head of Enterprise, Local Enterprise Office

Padraic McElwee is Head of Enterprise with Clare Co Co with responsibility for assisting early-stage enterprises and the economic development of Clare. He is a qualified Management Accountant and holds a Masters in Business Administration, a Bachelor of Financial Services, Diploma on Service Delivery and is a Qualified Financial Advisor. Padraic has over 34 years' experience in financial services, 22 of which were in Senior Manager roles working closely with businesses of different sizes across multiple sectors. Appointed to his current role in 2015, Padraic leads the Local Enterprise Office team which acts as a "first-stop shop" to provide support and services to start, grow and develop micro and small businesses. The Local Enterprise Offices are strategically charged with stimulating economic activity through the development of indigenous enterprise by harnessing the collective effort of a wide range of local stakeholders, focused on building local economies of real strength and permanence which enables the creation of sustainable employment.



Kathleen O' Regan
Senior Environmental Advisor, Enterprise Ireland

Kathleen O' Regan is a Senior Executive in the Sustainability and Climate Department of Enterprise Ireland. Kathleen manages Enterprise Ireland's Green Transition Fund which supports companies across each of the different aspects of their decarbonisation and sustainability journey – from initial planning and capability building to investment, research and innovation.



Aoife O'Sullivan
Head of Network Development and Innovation, Skillnet Ireland

Aoife is the Head of Network Development and Innovation with Skillnet Ireland where she oversees the management of 70 Skillnet Business Networks across a range of industry sectors and regions. Common among many of the Skillnets is the development and delivery of sustainability training to SME and multinational businesses based in Ireland. With over 15 years management experience, Aoife has a strong track record in relationship management and strategic communications. As a senior manager in the public and private sector, Aoife has gained a solid understanding of the development and learning needs of companies at various stages of their growth lifecycle.



Odile Le Bolloch
Scientist, Environmental Protection Agency

Odile Le Bolloch is a scientist in the Circular Economy Programme at the Environmental Protection Agency with over 25 years' experience working on sustainability and environmental issues.

She leads the Food Waste Prevention team and is responsible for implementing the national food waste prevention programme, targeting food waste in households through the national Stop Food Waste campaign, and through the Food Waste Charter to accelerate change across the supply chain and in the hospitality sector. The Charter is a voluntary agreement promoting a collective commitment to measure, reduce and report food waste along the food supply chain, supporting Ireland's food waste reduction target under the UN Sustainable Development Goal 12.3. Preventing and reducing food waste brings savings for businesses, through improved resource efficiencies and contributes to a lower carbon footprint.



Pauline McDonogh
Southern Regional Waste Planning Office

Pauline McDonogh works for the Southern Region Waste Planning Office. She is an Environmental Scientist with over 25 years' experience in environmental auditing, developing waste management projects and communicating on sustainability initiatives particularly in relation to waste. Pauline has worked in the UK as well as Ireland. Pauline's current role is to develop, co-ordinate and deliver circular economy activities based on the focus areas of the National Waste Management Plan for the Circular Economy.

